



FORTEC
GROUP

POS-Line 19.0

High-quality, robust monitors for process automation in industry

One partner, unlimited technology solutions

Product Features

POS-Line 19.0

Robust Monitor Series

Touchscreen possible

Variable front options



Monitor description

- Highly variable industry monitor solution
- robust, slim cover offers all options for integration and various applications and various modern business scenarios
- equipped with industrial displays and designed for long term availability
- light and slim design presents a modern small look
- passive cooling allows operating the system under full load even at high ambient temperatures
- VESA Mounting holes for using as an HMI or mounted on a stand
- Mounting brackets for in-wall mounting
- safety glass or touchscreens available



POS-Line IOT

- featuring the Raspberry Pi CM3+ based TFT platform Artista-IoT
- industrial functions like Real-Time-Clock and others
- Basis configuration: CM3+ | 32GB
- Standard configuration: Raspberry Pi®



POS-Line IQ

- High performance Intel® Celeron® J3455 processor
- 4GB highspeed RAM and an industrial grade SSD with 128 GB memory

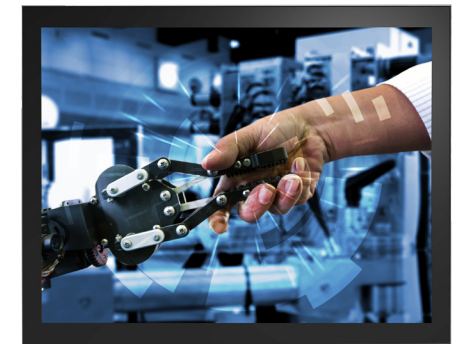
Panel and Housing

	Measure	Description
Panel Diagonal	[mm] / [Inch]	483/ 19
Type		Open -frame monitor with 2 mounting brackets (various bezels, TrueFlat glass and touch solutions are available under options)
Resolution	[Pixel]	1280 x 1024
Luminance (center)	[cd/m ²]	300
Viewing angle (U/ D/ L/ R)	[°]	89/ 89/ 89/ 89
Backlight Number of colors	— [M]	LED 16.7
Active area (H/V)	[mm]	376.32 x 301.06
Contrast ratio		2000:1
Response time (on/off)	[ms]	20
Pixel class		ISO 9241-307 (pixel error class II)
Life time back light until reaching half brightness	[h]	50.000
Continuous operating time	[h] / [d]	24/ 7
Mounting	[mm]	VESA 200 x 100
Storage temperature	[°C] / [°F]	-20 ~ 60 / -4 ~ 140
Storage/ Operating humidity	[%]	5 ~ 90 (non condensing)
Panel orientation		Landscape and Portrait
Location of connectors		Landscape: bottom/ Portrait: left (front view)
Location of OSD buttons		Landscape: bottom/ Portrait: right (front view)
Housing		Powdered Aluminium, black RAL 9005
IP grade		IP 65 on the front if option TrueFlat glass
Conformity		CE, FCC Class A, EU-RoHS
Packaging		Single packaging single packaging, up to 4 via parcel service, from 5 units on cargo pallet (max. 16 packages p.p.)
Package Contents		Safety instructions

POS-Line 19.0



Monitor open frame including two standard brackets



Monitor with TrueFlat glass

All figures are typical values. The real values of the panel may vary. The optical characteristics are determined after the panel has been „ON“ for approximately 30 minutes at an ambient temperature of 25 °C (77 °F). Life time of the backlight is defined as the time to take until the brightness reduces to 50% of its original value.

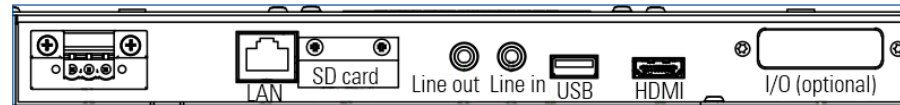
Video PME - VGA, HDMI, Display Port

POS-Line 19.0



Order number		DS-91-781
Interfaces		1 x VGA, 1 x HDMI, 1 x DisplayPort, 1 x Audio Line-Out, 1 x USB-Remote
Operating temperature	[°C/ F°]	0 ~ 50/ 32 ~ 122
Power supply	[V]	12
Power consumption (typ.)	[Watt]	21
Weight	[kg]	3.2
Dimensions (W x H x D)	[mm]	412.0 x 340.0 x 55.5
Package contents		SVGA cable

VideoPoster - Network Multimediamplayer



Order number		DS-91-782
Interfaces		1 x LAN, 2 x USB, 1 x HDMI, 1 x Line out, 1 x MicroSD card slot
Operating temperature	[°C/ F°]	0 ~ 45/ 32 ~ 113
Power supply	[V]	12
Power consumption (typ.)	[Watt]	24
Weight	[kg]	3.3
Dimensions (W x H x D)	[mm]	412.0 x 340.0 x 55.5
Package contents		USB Stick 8 GB

The information contained in this document has been carefully researched and is, to the best of our knowledge, accurate. However, we assume no liability for any product failures or damages, immediate or consequential, resulting from the use of the information provided herein. Our products are not intended for use in systems in which failures of product could result in personal injury. All trademarks mentioned herein are property of their respective owners. | Copyright 2024 FORTEC Integrated GmbH. All specifications are subject to change without notice.

WebPoster M3 - Website Player



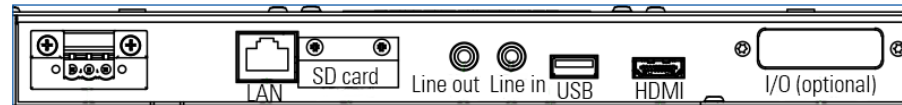
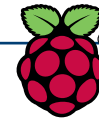
Order number		DS-92-229
Interfaces		1 x LAN, 2 x USB, 1 x HDMI, 1 x Line out, 1 x MicroSD card slot
Raspberry® PI		CM3+, 32 GB
Operating temperature	[°C/ F°]	0 ~ 45/ 32 ~ 113
Power supply	[V]	12
Power consumption (typ.)	[Watt]	24
Weight	[kg]	3.3
Dimensions (W x H x D)	[mm]	412.0 x 340.0 x 55.5

POS-Line 19.0

WebPoster M3 is an industrial FHD network player to show websites. It is a special designed FORTEC Integrated OS for Artista IOT monitors.

Firmware is compatible with touchscreen applications.

IOT - Raspberry® IoT Controller

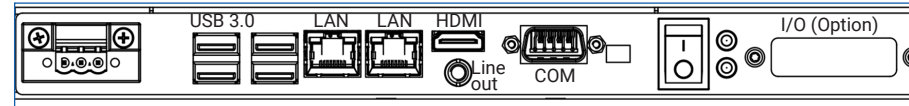


Order number		DS-91-820
Interfaces		1 x LAN, 2 x USB, 1 x HDMI, 1 x Line out, 1 x MicroSD card slot
Raspberry® PI		CM3+, 32 GB
Operating temperature	[°C/ F°]	0 ~ 45/ 32 ~ 113
Power supply	[V]	12
Power consumption (typ.)	[Watt]	24
Weight	[kg]	3.3
Dimensions (W x H x D)	[mm]	412.0 x 340.0 x 55.5

IQ Celeron - PC Intel® Celeron®



POS-Line 19.0



Order number		DS-92-176
Interfaces		2 x Gigabit LAN, 4 x USB 3.0, 1 x HDMI, 1 x RS232/422/485
PC		Intel® Celeron® J3455 (1,5GHz/2,3GHz), RAM: 4 GB DDR3L, Storage: min. 120 GB mSATA
Fan		no
Operating temperature	[°C/ F°]	0 ~ 45/ 32 ~ 113
Power supply	[V]	12 - 26
Power consumption (typ.)	[Watt]	33
Weight	[kg]	3.3
Dimensions (W x H x D)	[mm]	412.0 x 340.0 x 55.5

Various accessories are available for POS-Line monitors.
All monitors can be customized according to your specific requirements.

Please contact our sales team if you are interested in product modifications or custom designs.

Options

Order number		DS-91-792 - EOL
Name		Front plate rackmount
Finish		Aluminum, powdered, black RAL 9005
Can be combined with		Resistive touch, Safety glass
Weight	[kg]	0.80
Dimensions of monitor with option (W x H x D)	[mm]	482.6 x 400.0 x 99.0

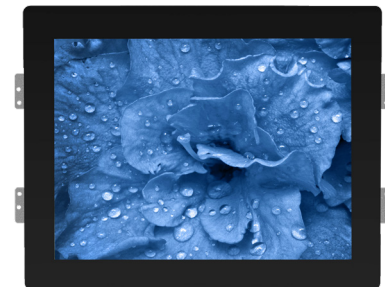
Order number		DS-91-325	DS-91-751 - EOL
Name		Front bezel	Front plate
Finish		Steel, powdered, black RAL 9005	Aluminum, powdered, black RAL 9005
Can be combined with		Resistive touch, Safety glass	
Weight	[kg]	0.50	0.60
Dimensions of monitor with option (W x H x D)	[mm]	415.0 x 343.0 x 57.0	454.0 x 382.0 x 60.4

POS-Line 19.0

Rackmount



Bezel | Plate



Front plate is a metal bezel for the open frame chassis and mounting brackets.

Options

Order number		DS-90-196	DS-91-756
Name		Safety glass	TrueFlat glass
Finish		Safety glass TSG, 3mm anti glare	Safety glass TSG, 3mm anti glare, printed black passepartout RAL 9005
IP grade		IP 64 in combination with bezel or plate **	Front IP 65**
Can be combined with		Front bezel, front plate	—
Weight	[kg]	0.80	1.50
Dimensions of monitor with option (W x H x D)	[mm]	412.0 x 340.0 x 55.5	454.0 x 382.0 x 61.5

*Glass and touch screens will reduce monitor brightness.

** depending on the customer's installation

Order number		DS-91-795
Name		Resistive touch
Bazel Glass		Safety glass TSG, 2.2 mm anti glare
Touch points		1
Touch technology		5 wire analogue resistive
IP grade		IP 64 in combination with bezel or plate **
Can be combined with		Front bezel, front plate
Available for controller		Video PME, IoT, IQ Celeron®
Weight	[kg]	0.60
Dimensions of monitor with option (W x H x D)	[mm]	412.0 x 340.0 x 55.5

POS-Line 19.0

Glass*



Safety glass is an accessory for the open frame chassis. It covers and protects the TFT-panel. TrueFlat glass is a safety glass with round corners and passepartout for the open frame chassis.

Touch*

Accessories

Product	Order no.	Product description
Additional RS 232 port	DS-91-823	2nd RS 232 port for IQ Celeron®

Product	Order no.	Product description
VESA adapter plate	DS-91-797	Adaption from VESA 200 x 100 to VESA 100 x 100 for all versions
Mounting brackets	DS-91-356	Set of two additional mounting brackets (one set is included in standard version), not available for options Front bezel and rackmount

Product	Order no.	Product description
Power supply 60 W	NT-01-062	12V/ 5A power supply, max. op. temperature 45°C
Power cord EU	DB-07-225	Power cord EU 1,8 m
Power cord UK	DB-07-226	Power cord UK 1,8 m
Power cord USA	DB-07-238	Power cord USA 1,8 m

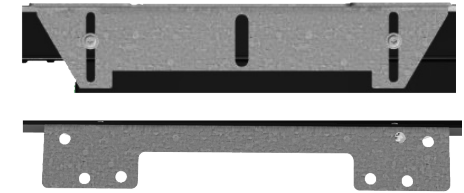
Product	Order no.	Product description
WIN 10 IOT Celeron®	DS-60-899	Embedded operation system 2019 LTSC
OS IoT Raspberry® PI	DS-60-859	for POS-Line IoT

Windows 10 IoT Enterprise is a full version of Windows 10 that provides enterprise manageability and security for embedded devices and IoT solutions such as medical devices, industrial automation, measurement systems, and more. It's a binary equivalent of Windows 10 Enterprise, so you can use the same familiar development and management tools as you would on client PCs and laptops. The embedded version of Windows 10 IoT Enterprise is supported by Microsoft for at least 10 years.

POS-Line 19.0

Electronic

Mount



Mounting brackets

Power Supply

Software

Unser Unternehmensnetzwerk unterstützt Sie weltweit mit Niederlassungen in Deutschland, Österreich, der Schweiz, Großbritannien und den USA. Für weitere Informationen kontaktieren Sie bitte:

CONTACT

FORTEC GROUP

FORTEC Elektronik AG | Augsburg Str. 2b | 82110 Germering
+49 89 894450-0
info@fortecag.de | www.fortecag.de

FORTEC INTEGRATED

FORTEC Integrated GmbH | Augsburg Str. 2b | 82110 Germering
+49 89 894363-0
info@fortec-integrated.de | www.fortec-integrated.de

FORTEC POWER

AUTRONIC Steuer und Regeltechnik GmbH | Siemensstraße 17 |
74343 Sachsenheim
+49 7147 24-0
vertrieb@autronic.de | www.autronic.de

FORTEC Power GmbH | Lise-Meitner-Straße 3 | 64560 Riedstadt
+49 6158 8285-0
weborder@fortec-power.de | www.fortec-power.de

FORTEC CZECH REPUBLIC

FORTEC Czech Republic s.r.o. | Přátelství 275 | 330 02 Dýšina
+42 0377 845878
alltronic@alltronic-sro.cz | www.alltronic-sro.cz

FORTEC SWITZERLAND

FORTEC Switzerland AG | Bahnhofstraße 3 | 5436 Würenlos
+41 44 7446111
info@fortec.ch | www.fortec.ch

FORTEC UNITED KINGDOM

FORTEC Technology UK Ltd. | Osprey House | 1 Osprey Court
Hinchingbrooke Business Park | Huntingdon | Cambridgeshire | PE29 6FN
+44 1480 411600
info@fortec.uk | www.fortec.uk



Apollo Display Technologies, Corp. | 87 Raynor Avenue Unit 1 | Ronkonkoma
NY | 11779
+1 631 5804360
info@apollodisplays.com | www.apollodisplays.com